

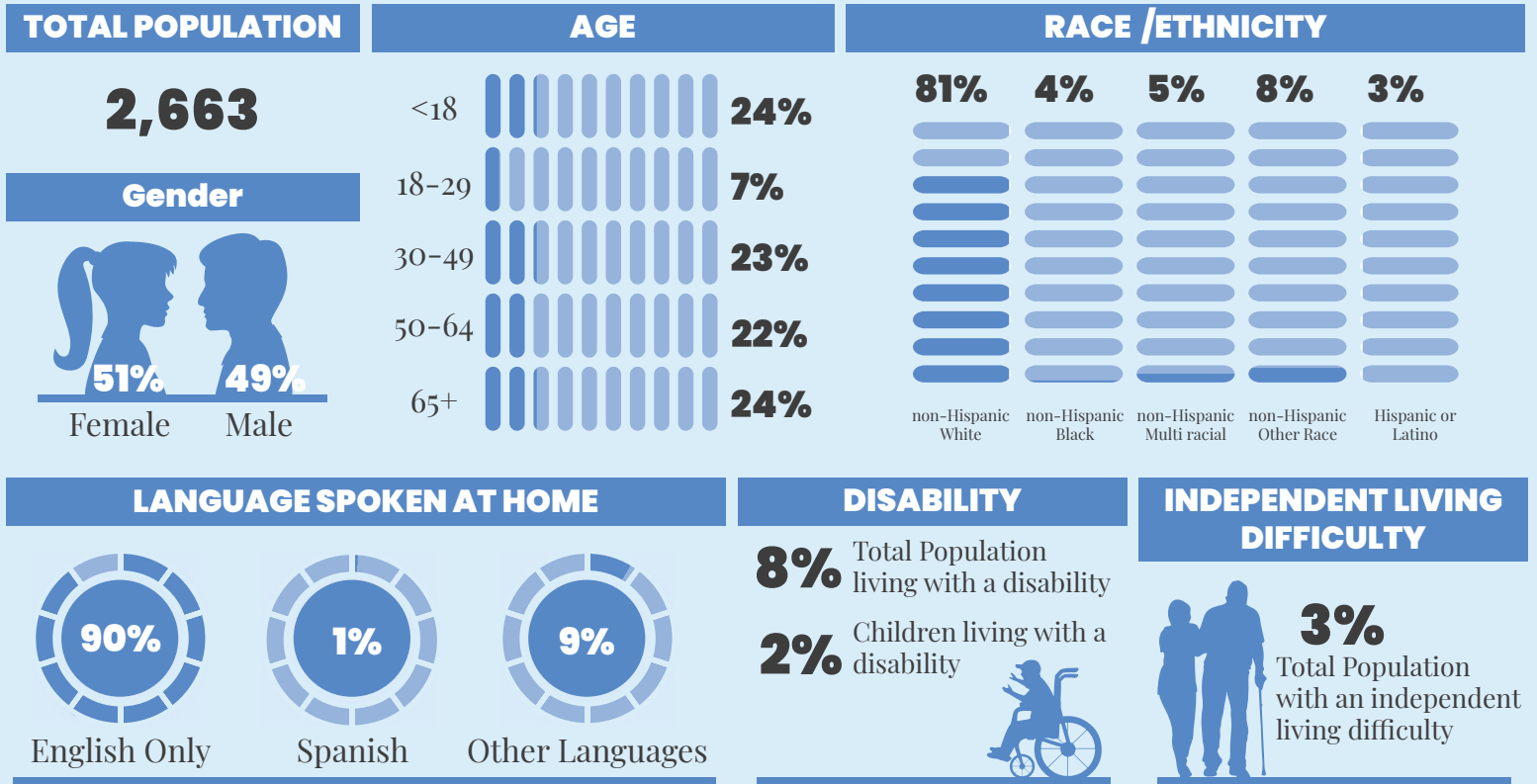
WeTHRIVE!SM Data Profile

EVENDALE

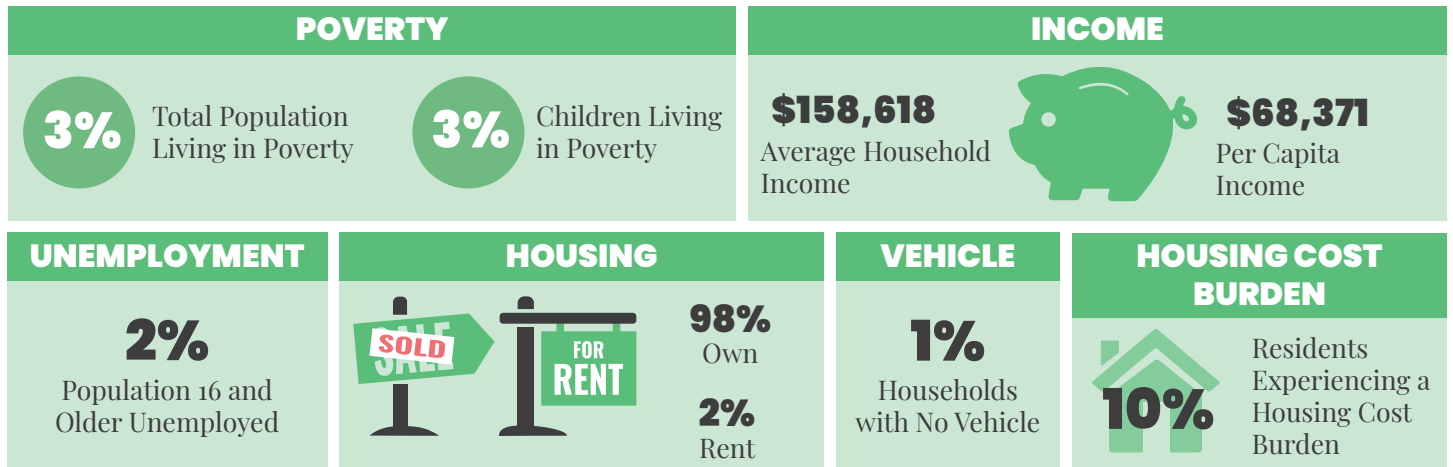
• 2024 •



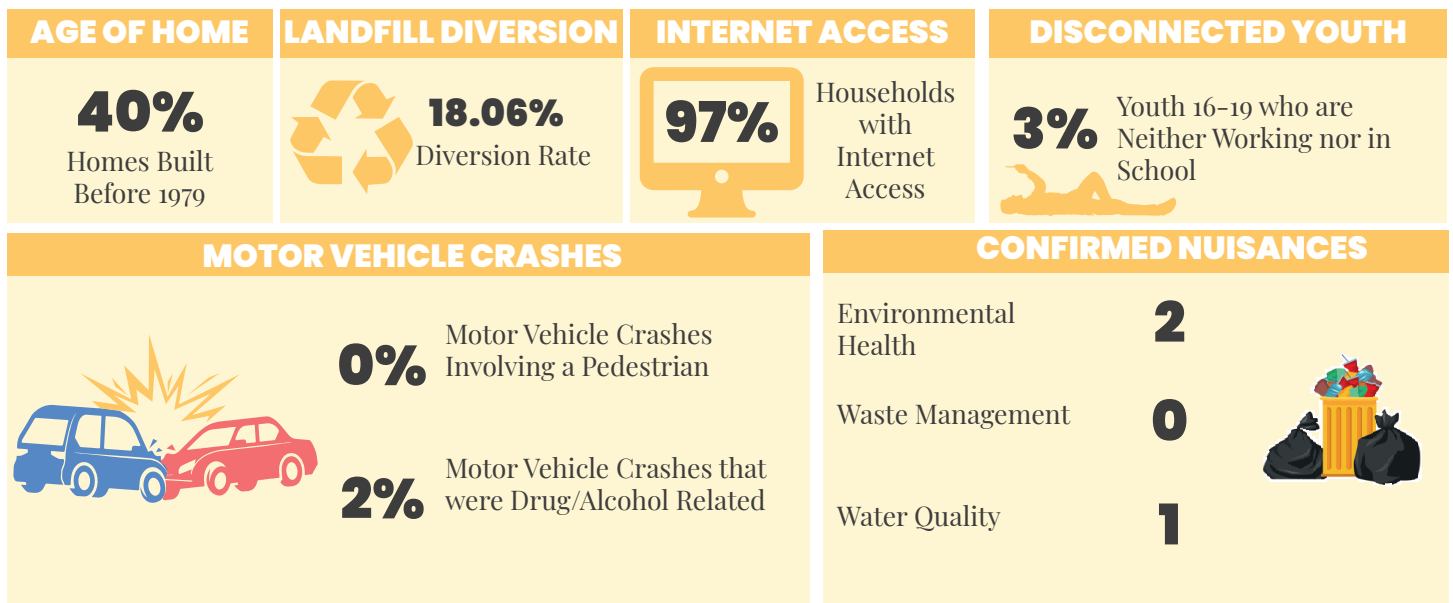
DEMOGRAPHICS | 2022



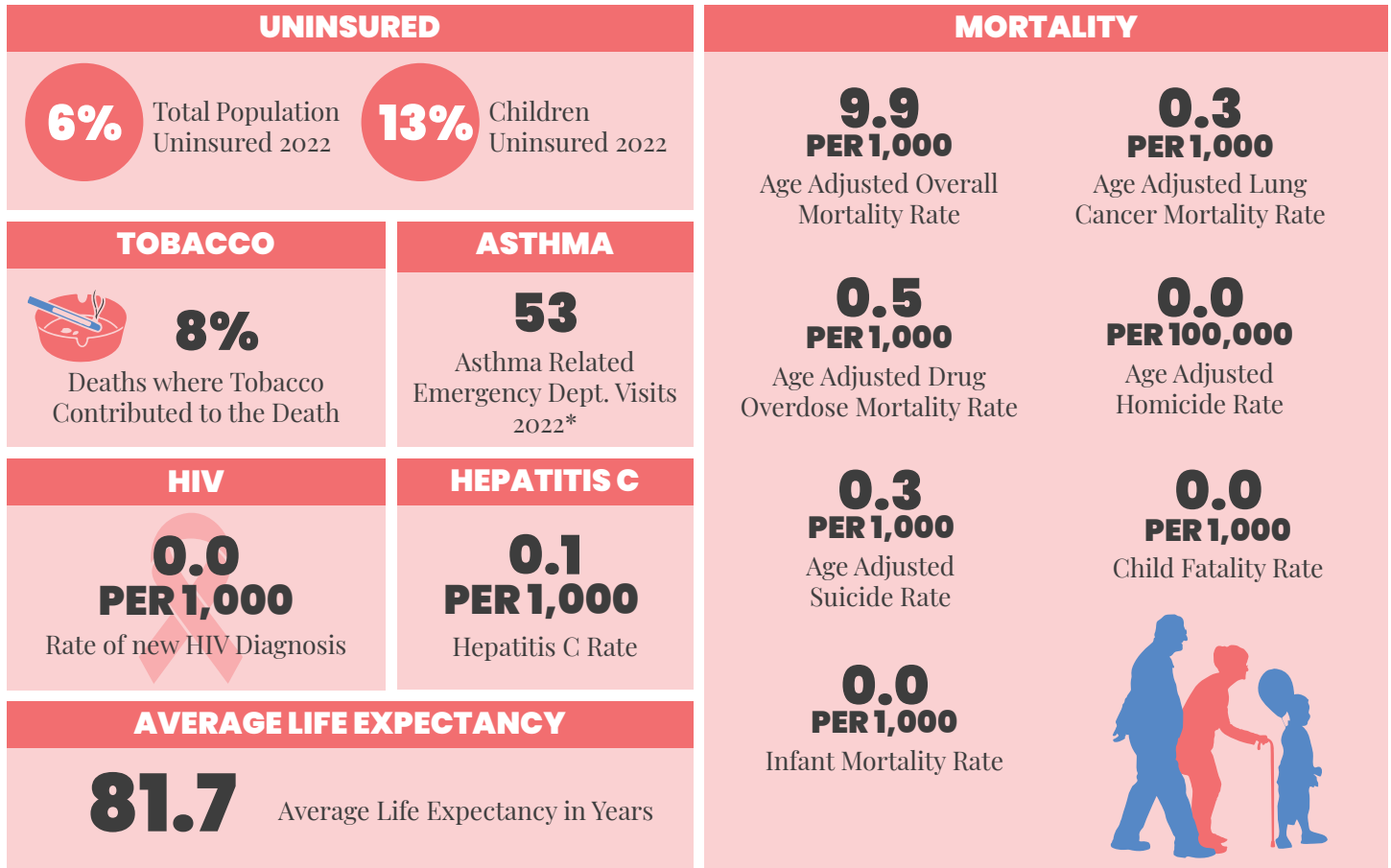
ECONOMIC STABILITY | 2022



NEIGHBORHOOD & BUILT ENVIRONMENT | 2022



HEALTHCARE & HEALTH OUTCOMES | 2018-2022



*NOTE | This data is ZIP codes that cover Evendale. These ZIP codes are: 45215, 45241

WeTHRIVE! IN EVENDALE

Evendale joined the WeTHRIVE! community in 2013 and celebrated year 7 of recognition.

In 2023, WeTHRIVE! in Evendale rebuilt their team to include Fire, Cultural Art, Recreation, and residents. Projects included:

- Focusing on Physical Activity, Social Health, and Injury Prevention
- Installation of AED equipment throughout the municipal complex
- Preparation for volleyball court upgrade
- Participation in Triangle Trail feasibility study

Evendale WeTHRIVE! Team is looking forward to improving safety and access throughout the Village in 2024.

We THRIVE!

Community Wellness in Action

CONTACT US

WeTHRIVE!
250 William Howard Taft Rd
Cincinnati, Ohio 45219
(513) 946.7800

www.WatchUsThrive.org

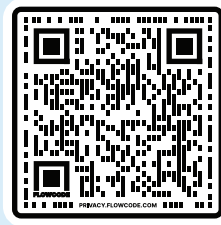
WE'RE SOCIAL!

Follow us on your favorite social media platform



@WATCHUSTHRIVE

Use the QR Code below for additional information about the data in this report.



PREVENT. PROMOTE. PROTECT.

