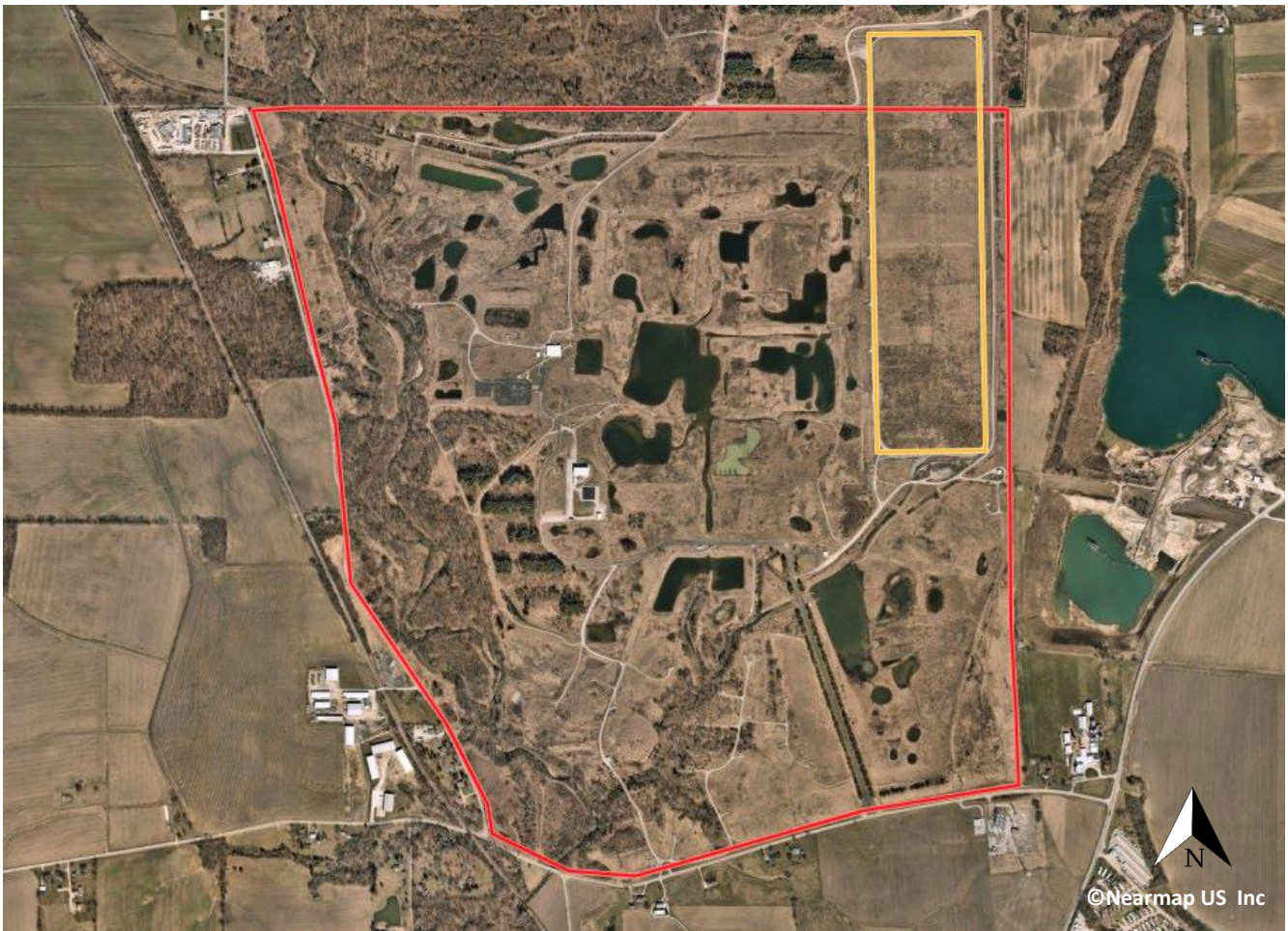


3.6.1 Fernald

Facility Name: Fernald
A.K.A.: Feed Materials Production Center
Location: 7400 Willey Road
Parcel(s): 53000700001 (*onsite disposal area – yellow outline*)
Lat, Long: 39.301493 -84.681879
Region: Crosby Township
Owner: United States of America
Operation (yrs): unknown



FACILITY OVERVIEW

Fernald was an industrial facility owned by the US Department of Energy (DOE). The former facility covered more than 1000 acres in both Hamilton and Butler Counties. The primary purpose of the facility was to produce purified uranium metal and compounds for use at other DOE sites from 1951 to 1989. Site activities produced a wide range of wastes that were treated, stored, and disposed of at the site. HCPH was not a primary participant in monitoring or clean up of the site and therefore have limited documents related to the site. US EPA, Ohio EPA, and DOE should be contacted for more complete and specific information.

An onsite disposal form completed in 1977 indicates a landfill has been operated onsite since 1951 and an incinerator has been operated since 1957. Reports related to the site indicate the facility utilized incinerators for disposal of "trash, paper, wood etc." In June 1985, a PTI application was submitted to construct a solid waste disposal facility at the site. The PTI indicated that wastes disposed of would be "non-contaminated, non-radioactive solid wastes". The PTI indicates there are existing disposal cells already in use. The site was placed on US EPA's National Priorities List in 1989 and an extensive environmental cleanup of the site began in the years after. Remediation of the site included an on-site disposal facility containing approximately 3 million cubic yards of contaminated soil and debris which was constructed in the northeast area of the property (*outlined in yellow in the above aerial photo*).

The site present day is a park, known as Fernald Preserve, managed by the U.S. Department of Energy Office of Legacy Management under the Comprehensive Environmental Response, Compensation, and Liability Act and the Resource Conservation and Recovery Act. According to the preserve's website the park consists of approximately 7 miles of trails, 395 acres of forest, 354 acres of prairies and grasslands, 60 acres of open water, 81 acres of wetlands, 33 acres of savanna and a visitor center. The present-day photo below shows the on-site disposal facility in the distance.

