

# HAMILTON COUNTY

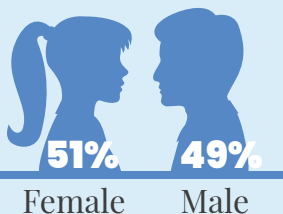
• 2025 •

## DEMOGRAPHICS | 2023

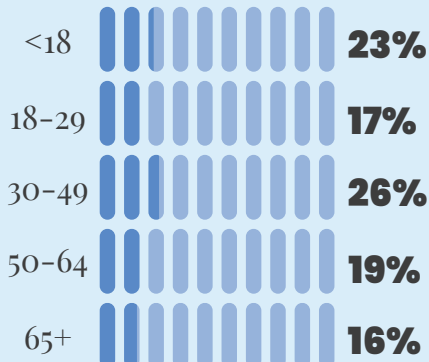
### TOTAL POPULATION

**827,878**

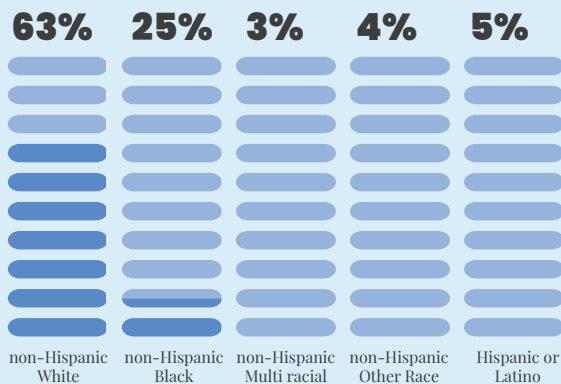
### Gender



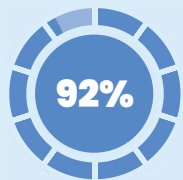
### AGE



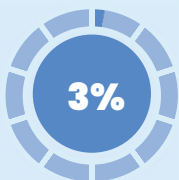
### RACE / ETHNICITY



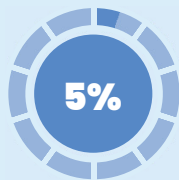
### LANGUAGE SPOKEN AT HOME



English Only



Spanish



Other Languages

### DISABILITY

**13%** Total Population living with a disability  
**6%** Children living with a disability

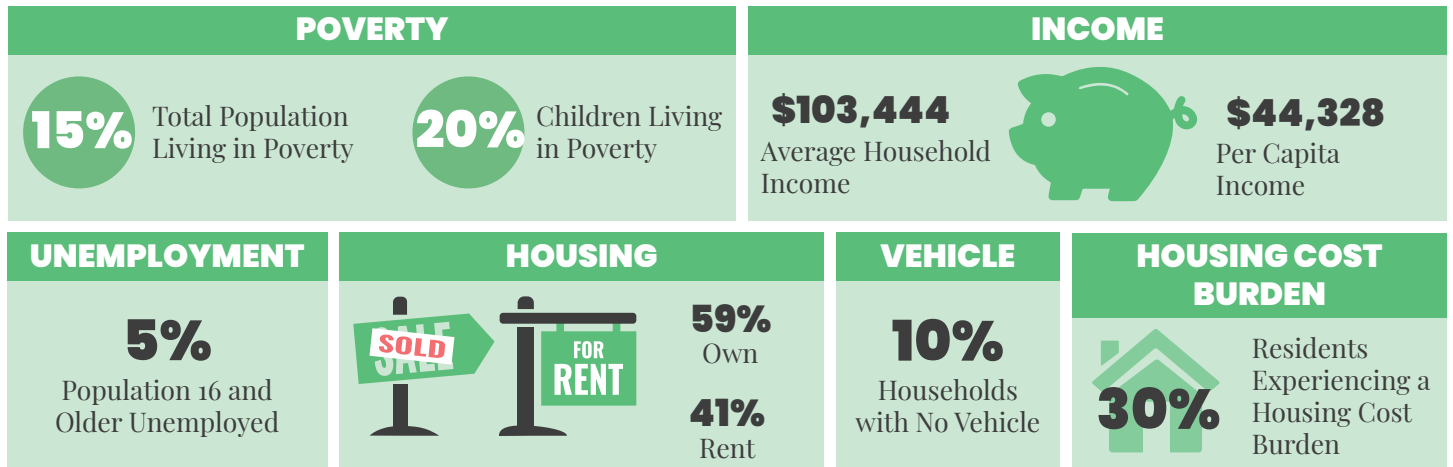


### INDEPENDENT LIVING DIFFICULTY

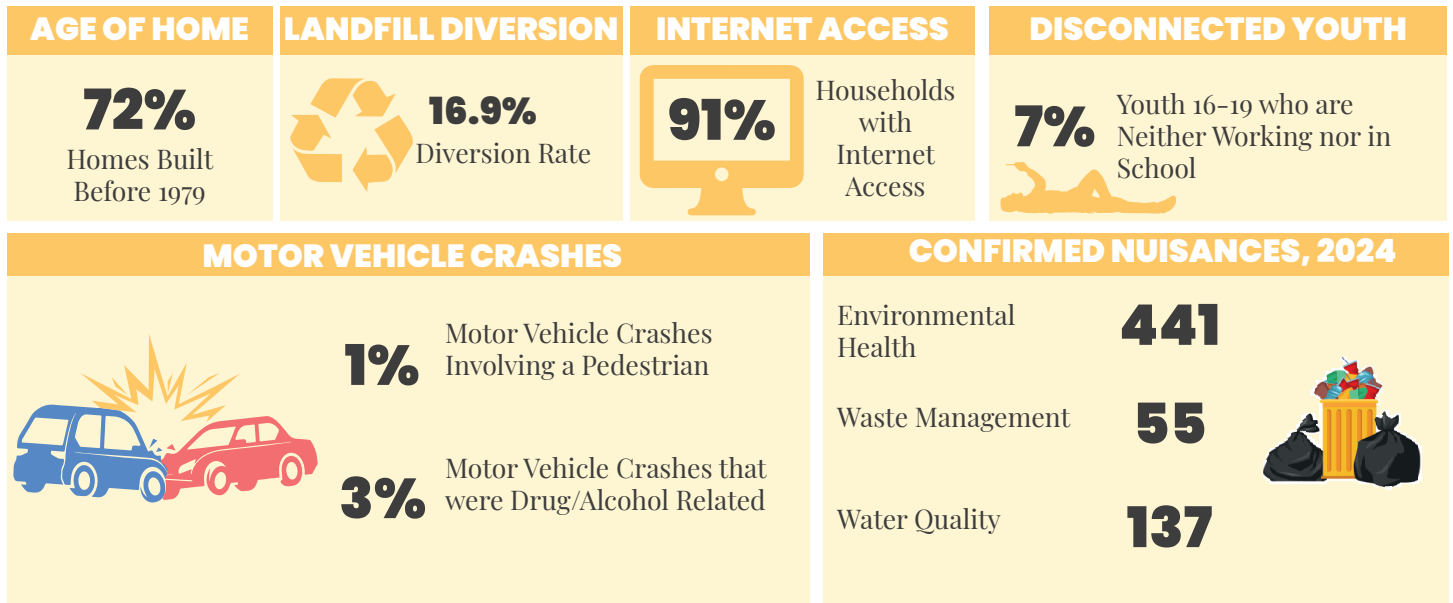
**5%** Total Population with an independent living difficulty



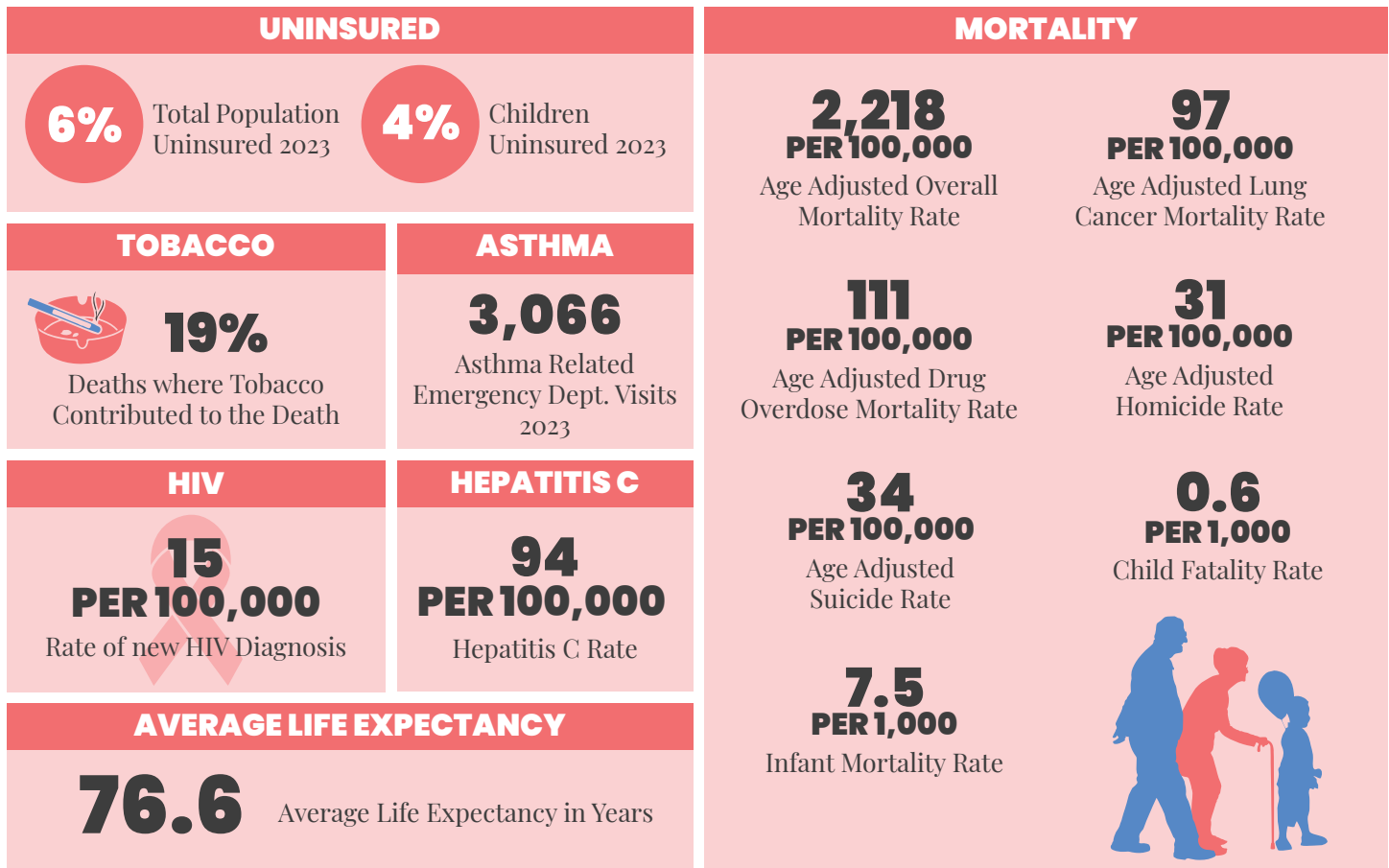
## ECONOMIC STABILITY | 2023



## NEIGHBORHOOD & BUILT ENVIRONMENT | 2023



## HEALTHCARE & HEALTH OUTCOMES | 2019–2023



## WeTHRIVE! IN HAMILTON COUNTY

WeTHRIVE! is a community-driven approach that engages multiple sectors in communities and schools to make healthy living easier for all. The overall mission is to create a culture of health, safety, and vitality throughout Hamilton County.

WeTHRIVE! staff members from Hamilton County Public Health work with local communities and schools to provide:

- Support
- Collaboration
- Data
- Recognition & Celebration

In 2023, WeTHRIVE! recognized 18 WeTHRIVE! communities and 8 WeTHRIVE! School districts for their continued dedication to promote healthy places to live, work, learn, and play. WeTHRIVE! communities and schools continued to show how they can be adaptable, resilient, and think outside the box. WeTHRIVE! staff worked closely with communities and schools to re-engage through the COVID-19 response, expand WeTHRIVE! community and school teams, complete assessments, develop action plans and provide support and resources to teams to implement identified strategies.

# We THRIVE!

*Community Wellness in Action*

## CONTACT US

WeTHRIVE!  
250 William Howard Taft Rd  
Cincinnati, Ohio 45219  
(513) 946.7800

[www.WatchUsThrive.org](http://www.WatchUsThrive.org)

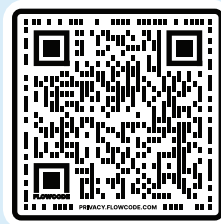
## WE'RE SOCIAL!

Follow us on your favorite social media platform



**@WATCHUSTHRIVE**

Use the QR Code below for additional information about the data in this report.



PREVENT. PROMOTE. PROTECT.

