

Community Data Profile

MADEIRA

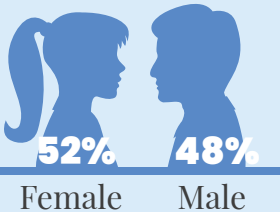
• 2025 •

DEMOGRAPHICS | 2023

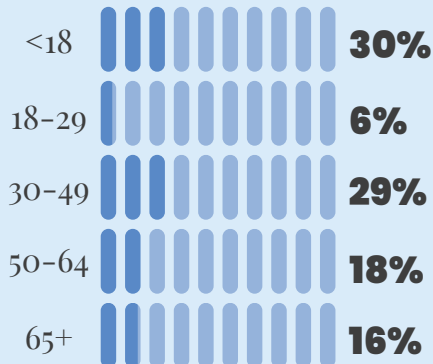
TOTAL POPULATION

9,454

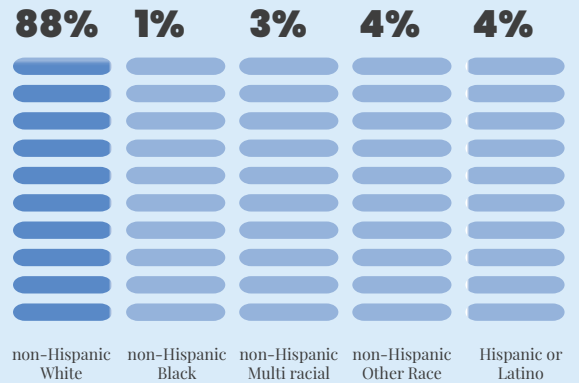
Gender



AGE



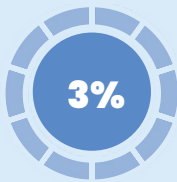
RACE / ETHNICITY



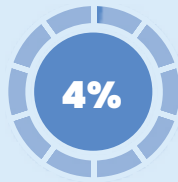
LANGUAGE SPOKEN AT HOME



English Only



Spanish



Other Languages

DISABILITY

8% Total Population living with a disability

1% Children living with a disability



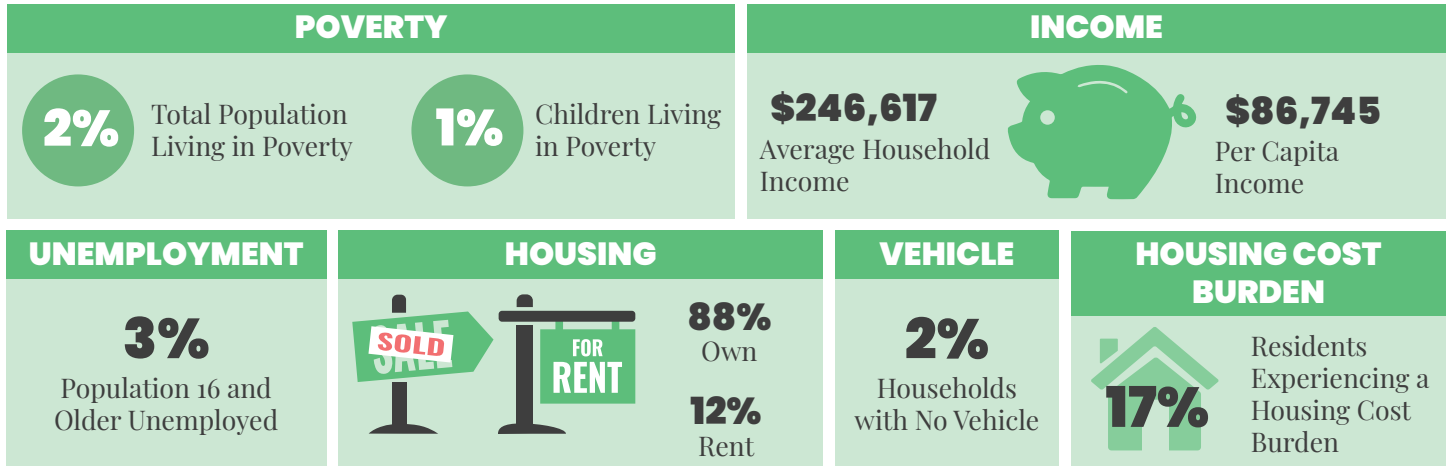
INDEPENDENT LIVING DIFFICULTY

5%

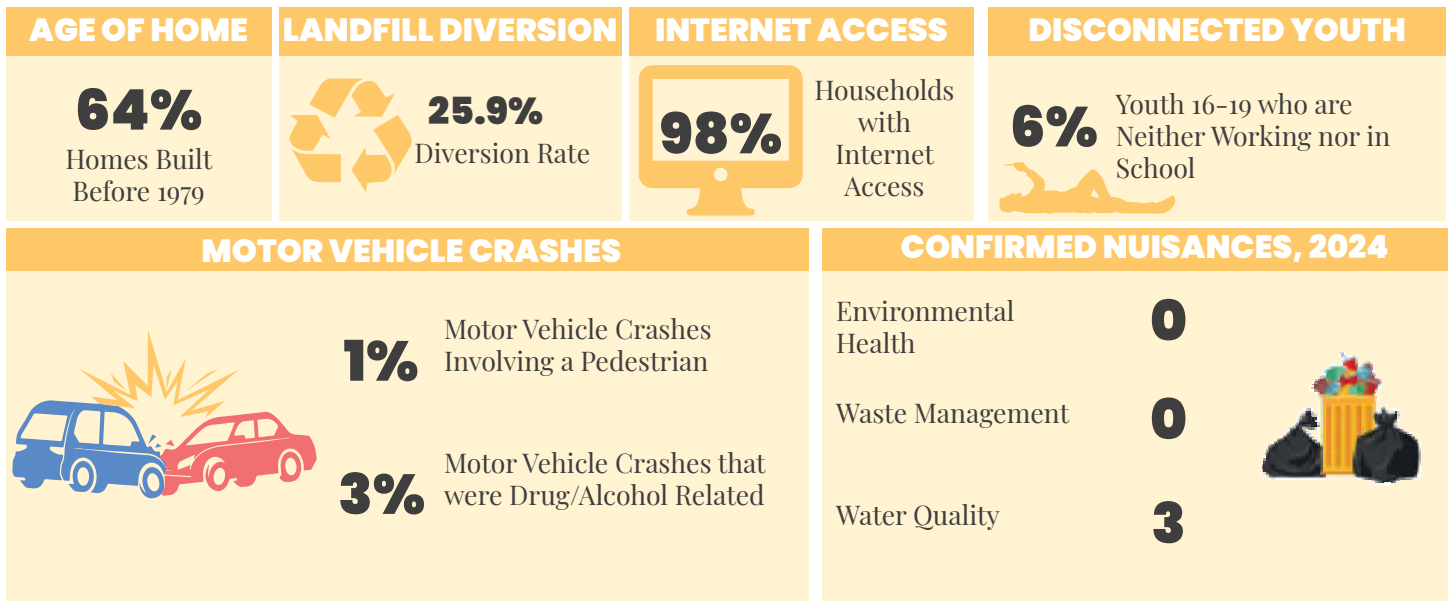
Total Population with an independent living difficulty



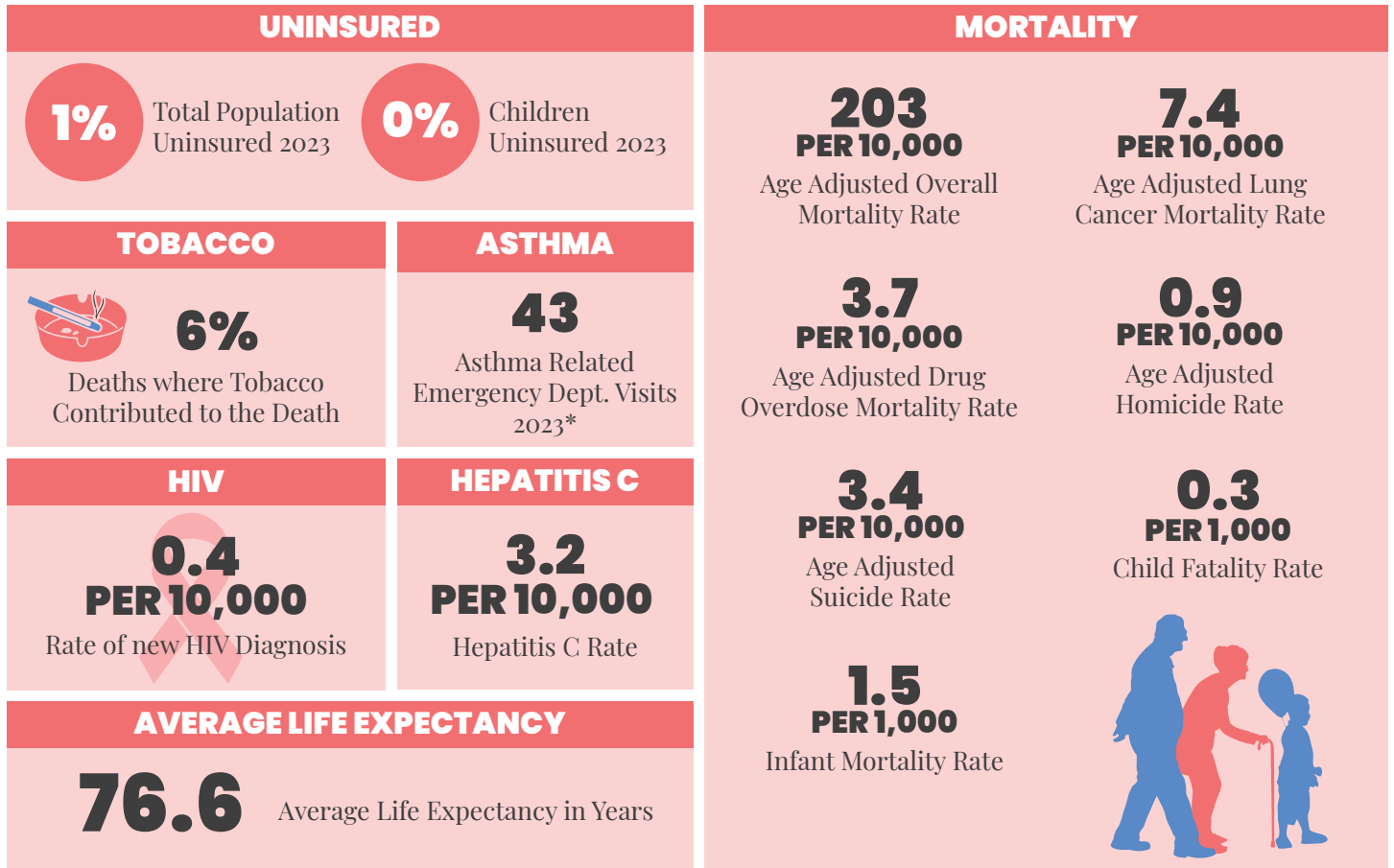
ECONOMIC STABILITY | 2023



NEIGHBORHOOD & BUILT ENVIRONMENT | 2023



HEALTHCARE & HEALTH OUTCOMES | 2019–2023



*NOTE | This data is for ZIP codes that cover Madeira. These ZIP codes are: 45227, 45236 & 45243



CONTACT US

Hamilton County Public Health
250 William Howard Taft Rd
Cincinnati, Ohio 45219
(513) 946.7800

www.hamiltoncountyhealth.org

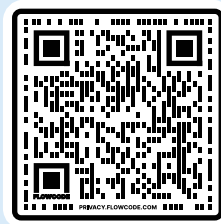
WE'RE SOCIAL!

Follow us on your favorite social media platform



@HAMCOHEALTH

Use the QR Code below for additional information about the data in this report.



PREVENT. PROMOTE. PROTECT.

