

# Community Health Assessment 2025

## ● City of Mt. Healthy ●



# Introduction

The WeTHRIVE!<sup>SM</sup> Community Health Assessments (CHA) paint a comprehensive picture of the community's current and past health status, factors contributing to higher health risks and poorer health outcomes, needs in the community, and community resources available to improve health.

The WeTHRIVE! CHA helps aid community partners, stakeholders and residents in identifying priority health issues, developing goals, and selecting strategies to improve residents' health. The data comes from multiple sources, including surveys, surveillance systems and landscape reviews (see data notes QR code). Using multiple data sources allows for a comprehensive picture of the health of the community. The Hamilton County CHA released in 2025 provides an overview of the health of Hamilton County, while the WeTHRIVE! CHA allows WeTHRIVE! teams to take a deeper dive into their community-specific data.

This report includes the following topics relevant to health and wellness of residents within the community:

- Community Context (who makes up your community)
- Healthcare and Health Outcomes
- Economic Stability
- Neighborhood and Built Environment
- Assets and Opportunities
- Recommendations

***"Public health in Hamilton County means working together to ensure that all of our residents have the opportunity to thrive both individually and collectively. When people are healthy, they can lead fuller, happier lives while also contributing to the local economy and culture."***

-Greg Kesterman, Hamilton County Public Health, Health Commissioner



# WeTHRIVE! Overview

The WeTHRIVE! initiative of Hamilton County Public Health is a paradigm shift that engages communities, and schools and child care providers to make meaningful and sustainable policy, environmental, and system changes where people live, work, learn, and play, ensuring that all individuals have the opportunity to thrive. The WeTHRIVE! initiative works to create a culture of health, safety, and vitality throughout Hamilton County. The four pillars of WeTHRIVE! are:



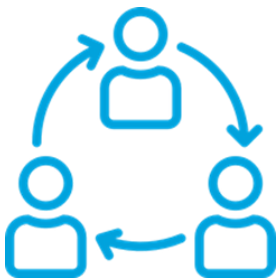
## **SUPPORT**

WeTHRIVE! Population Health Specialists help start a team, offer assistance, and connect the teams to resources.



## **DATA**

The most up-to-date public health [data](#) is shared to help determine areas of need and plan for the future.



## **COLLABORATION**

The WeTHRIVE! initiative fosters a culture of collaboration by bringing together child care providers, communities, schools, and [partner organizations](#).



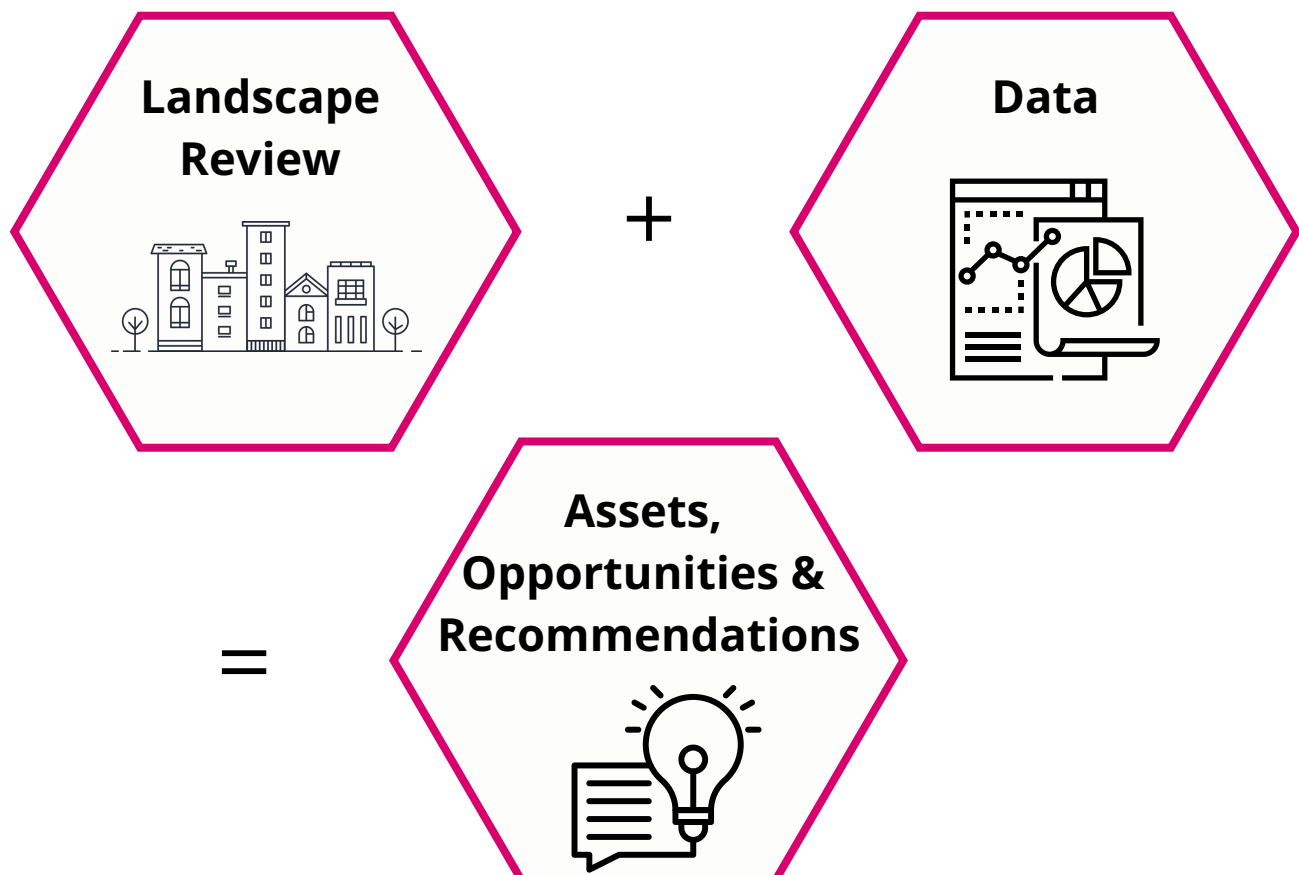
## **RECOGNITION & CELEBRATION**

The initiative is all about celebrating the positive progress and changes our amazing teams work so hard to implement.

**We**  
**THRIVE!**  
*Community Wellness in Action™*

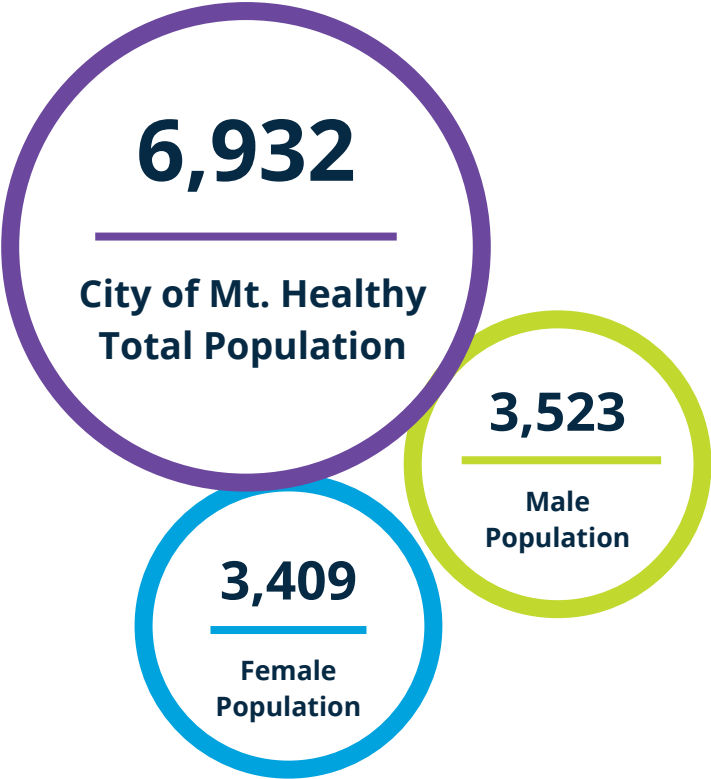
# WeTHRIVE! CHA Process

As part of data provided to WeTHRIVE! communities, the WeTHRIVE! CHAs are completed every three years to provide an opportunity to take a deeper dive into the annual WeTHRIVE! Data Profiles that are shared with each active WeTHRIVE! community. The WeTHRIVE! CHAs are developed by the Health Promotion & Education and Epidemiology divisions at Hamilton County Public Health. The Epidemiology division reviews and analyzes a variety of data sources that include health, social, economic, and environmental indicators to help paint a picture of the health and wellbeing of a community. To expand on data, the Health Promotion and Education division works with WeTHRIVE! teams to provide community context and lived experiences through the WeTHRIVE! Landscape Review. The WeTHRIVE! Landscape Review looks at community conditions and resources related to the WeTHRIVE! pathways that impact residents overall health by driving/walking around the community to get a visual representation of the community. Together, data is compiled into a list of assets, opportunities, and recommendations that are specific to each community to provide team members with the actionable strategies to promote the health of all residents.



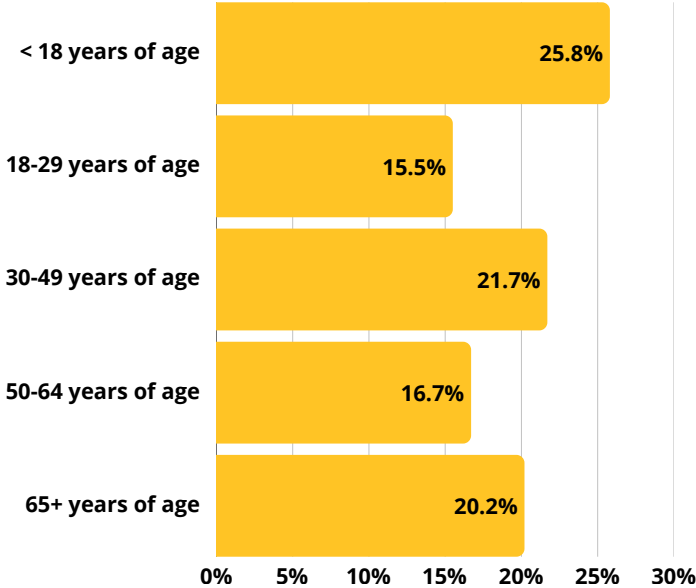


# Community Context , 2023

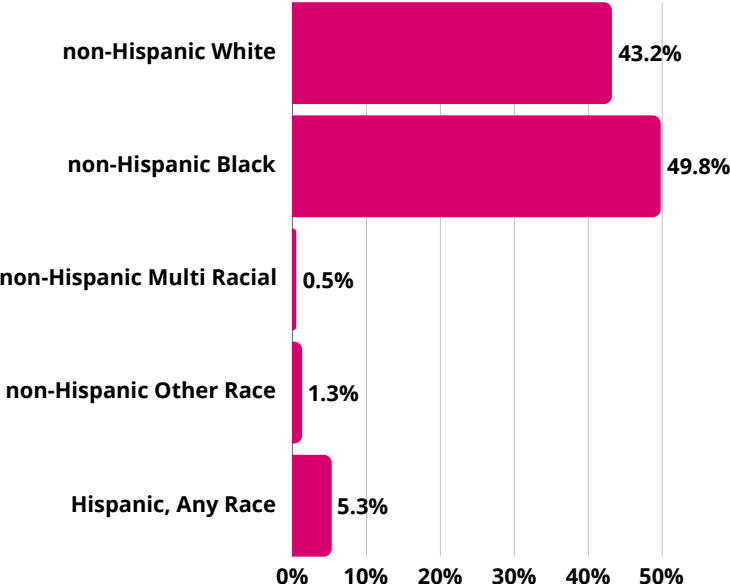


To effectively enhance health outcomes, it's important to comprehend the context in which these issues arise. Understanding the community context is a foundational and vital step in promoting positive health within a community. In this report, community context encompasses population demographics, including age, gender, and race/ethnicity.

Population by Age



Population by Race/Ethnicity

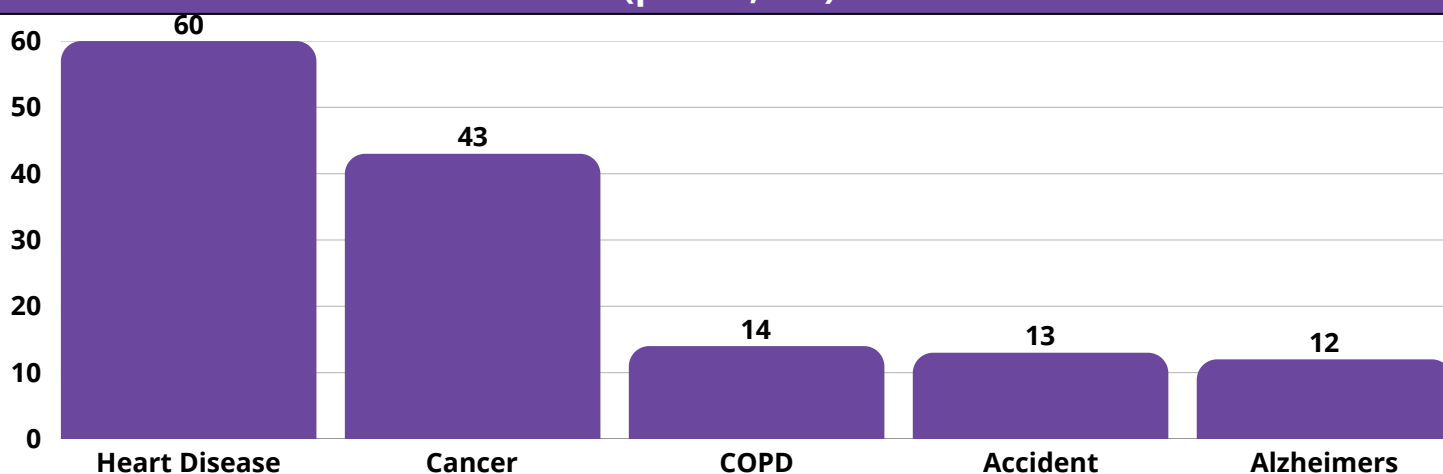


# Healthcare and Health Outcomes : 2019 - 2023



Access to quality healthcare is a major component of increasing quality of life for all people. Barriers to healthcare, such as gaps in health insurance coverage, can delay access to preventative services that can lead to preventable disease and premature death. There are a variety of metrics we can look at to measure the overall health of a community such as mortality rates, uninsured rates, rates of infectious disease, and more. All of these metrics allow us to gain a better understanding of the health needs of the community.

## Top Five Leading Causes of Death by Age - Adjusted Mortality Rates (per 10,000)



### Child Fatality Rate (per 1,000)

0.7 ♦

### Infant Mortality Rate (per 1,000)

8.8 ♦

### Average Life Expectancy

72.3

### Independent Living Difficulty

6.9%

Total population with an independent living difficulty, 2023



### Disability Characteristics

15%

Total population with a disability, 2023

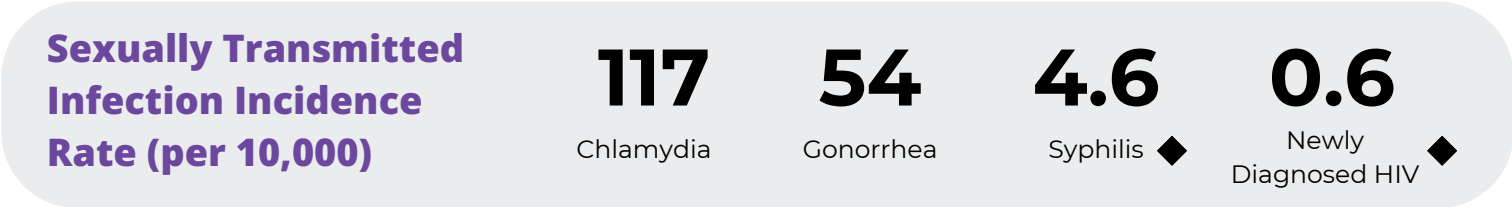
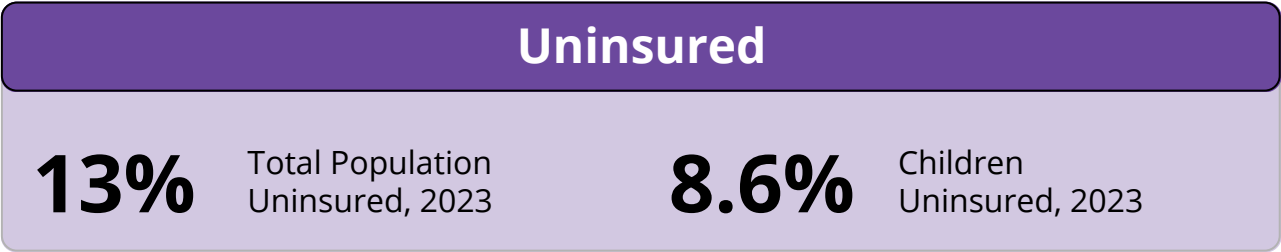
3.4%

Child population with a disability, 2023



= less than 20 cases. Please see data notes at end of report for more information on the significance of small numbers.

# Healthcare and Health Outcomes : 2019 - 2023



Preterm Births



Asthma Related Emergency Department Visits, 2023\*



Overdose Related Emergency Department Visits\*



Naloxone Kits Distributed\*

♦ = less than 20 cases. Please see data notes at end of report for more information on the significance of small numbers.  
\* = This data is ZIP codes that cover the City of Mt. Healthy. The ZIP Code is: 45231.



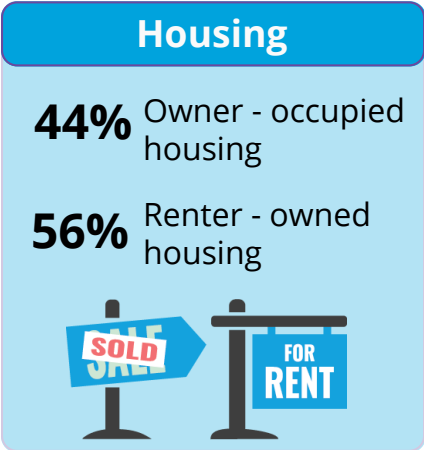
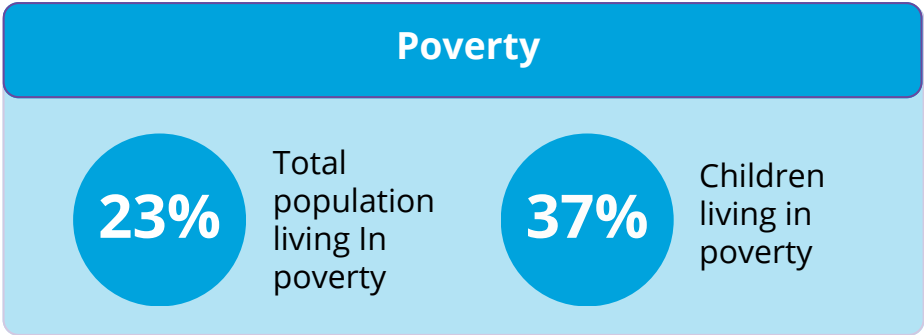


# Economic Stability, 2023

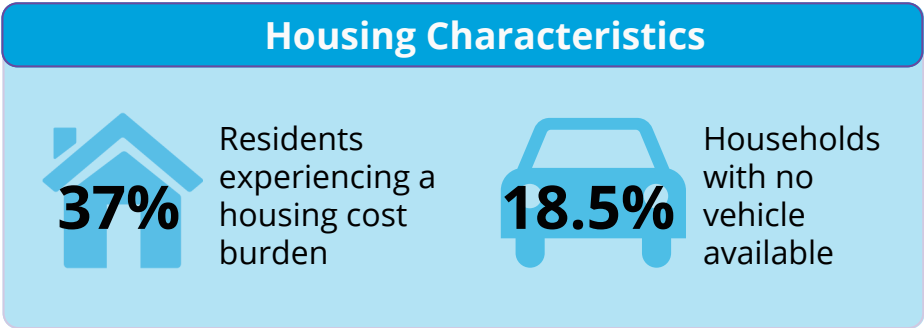
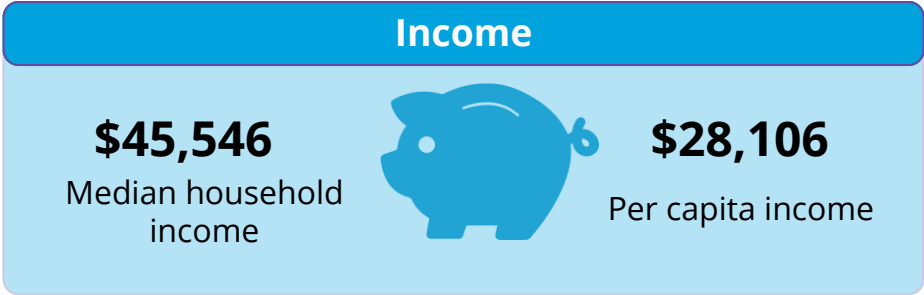
The economic stability of individuals within a community can have a lasting impact on the overall health of that community. Economic stability means that individuals have sufficient and reliable income to pay for expenses such as healthcare. Lack of economic resources makes it more difficult for an individual to access healthcare and sustain healthy behaviors. There are a variety of metrics to look at that can measure the overall economic stability of a community such as unemployment rates, household income, rates of households receiving public benefits, and more.



Population 16 and Older  
Unemployed



Households receiving SNAP benefits



# Neighborhood & Built Environment, 2023



The built environment is the man-made space where individuals live, work, and play on a day-to-day basis. This includes buildings, parks, sidewalks, streets, public transportation and other spaces that have been created or modified. It can affect the potential for injuries related to pedestrian and motor vehicle crashes. It can also affect an individual's access to healthy food, recreation opportunities and clean, safe places to work and play.

## Motor Vehicle Crashes

**1.4%** Motor vehicle crashes involving a pedestrian or bicyclist ♦

**18%** Motor vehicle crashes involving a child or teenager

**1.7%** Motor vehicle crashes involving drugs or alcohol



**0.2%** Fatal motor vehicle crashes ♦

**0.92**

Social Vulnerability Index

## Lead Exposure

**1.5%** Children aged 5 and under with an elevated blood lead level, 2019 - 2023

**80%** Housing built prior to 1979

## Built Environment

**66%** Ground surface that is green space



**Above Average Walkability**

## Food Access

**11%** Population low-income and over a mile from supermarket, 2019

**6**

Stores that accept SNAP benefits

**78%**

Households with internet access

**29.6%**

Youth 16-19 who are neither working nor in school



♦ = less than 20 cases. Please see data notes at end of report for more information on the significance of small numbers.





# Assets & Opportunities

## Assets

- 81.1 percent of adults aged 18 years and older get an annual check up in Mt. Healthy.
- The Mt. Healthy Fire Station is a Safe Place designated site where teens can go if they are in crisis.
- Forest Avenue Wetlands Park has an idle-free policy to support clean air and a healthy environment.
- The Mt. Healthy Branch Library is a resource for residents and hosts events promoting social connectedness.
- Mt. Healthy City Hall has a breastfeeding-friendly space, offering residents a private and secure area for feeding or pumping as needed.
- Tikkun Farms repurposes food waste through their composting program.
- In the Community Voice survey conducted in the summer of 2024, Mt. Healthy residents report feeling a strong sense of belonging and value the variety of public events available to the community.

## Opportunities

- There are no grocery stores within Mt. Healthy.
- There are no child safety seat Inspection programs in Mt. Healthy.
- There is currently no active neighborhood watch program in the community.
- There are currently no fall prevention based programs in Mt. Healthy.
- The percentage of teenagers between the ages of 16-19 who are unemployed and not in school (disconnected youth) in Mt. Healthy is 4.7 times higher than other cities and townships in Hamilton County.
- The percentages of households without a vehicle in Mt. Healthy is 3.6 times higher than other cities and townships in Hamilton County.
- The uninsured rate for all Mt. Healthy residents is 2.8 times higher than other cities and townships in Hamilton County.

# Recommendations

The following recommendations are based on the assets and opportunities identified for your community. The corresponding WeTHRIVE! pathway or pathways for each recommendation are indicated to the right of each recommendation.



= Chronic Disease Pathway



= Injury Prevention Pathway



= Environmental Health Pathway














= Harm Reduction Pathway



= Emergency Preparedness Pathway



= Social Health Pathway

Recommendations	WeTHRIVE! Pathway
Increase residents' access to healthy food options by working with organizations like Freestore Foodbank or Last Mile Food Rescue to organize food distribution events on a fixed schedule or promote nearby food pantries.	 
Promote child safety by partnering with Cincinnati Children's Hospital Medical Center or Mt. Healthy fire department to implement a Child Safety Seat inspection program.	
Increase community safety by working with city officials, police or fire to reinstate a neighborhood watch program.	 
Partner with Council on Aging or People Working Cooperatively to implement strategies to reduce the number of fall-related injuries to residents.	
Identify community partners to help offer job readiness training, education classes (GED, trade skills, etc.), and other trainings to help reduce the number of residents aged 16 to 19 who are disconnected.	
Promote MetroNow! to residents in Mt. Healthy, enhance bike and pedestrian safety through infrastructure improvements, and develop rideshare or carpool initiatives to increase transportation options.	  
Partner with local healthcare providers, nonprofit organizations, and insurance navigators to expand access to affordable healthcare resources for uninsured residents. Strategies could include hosting enrollment assistance events, bringing the 513 Relief Bus to the community, and putting insurance information in main community locations.	 



# Contact Us



513-946-7800



[WatchUsThrive.org](http://WatchUsThrive.org)



[@WatchUsTHRIVE](https://www.facebook.com/WatchUsTHRIVE)



[@WeTHRIVEHamiltonCo](https://www.instagram.com/WeTHRIVEHamiltonCo)

## Data Notes



*To receive supplemental data tables for this report, please reach out to the WeTHRIVE! Team.*



**HAMILTON COUNTY  
PUBLIC HEALTH**

PREVENT. PROMOTE. PROTECT.

